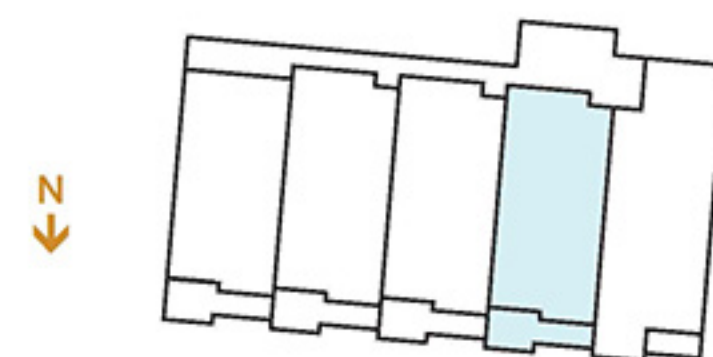
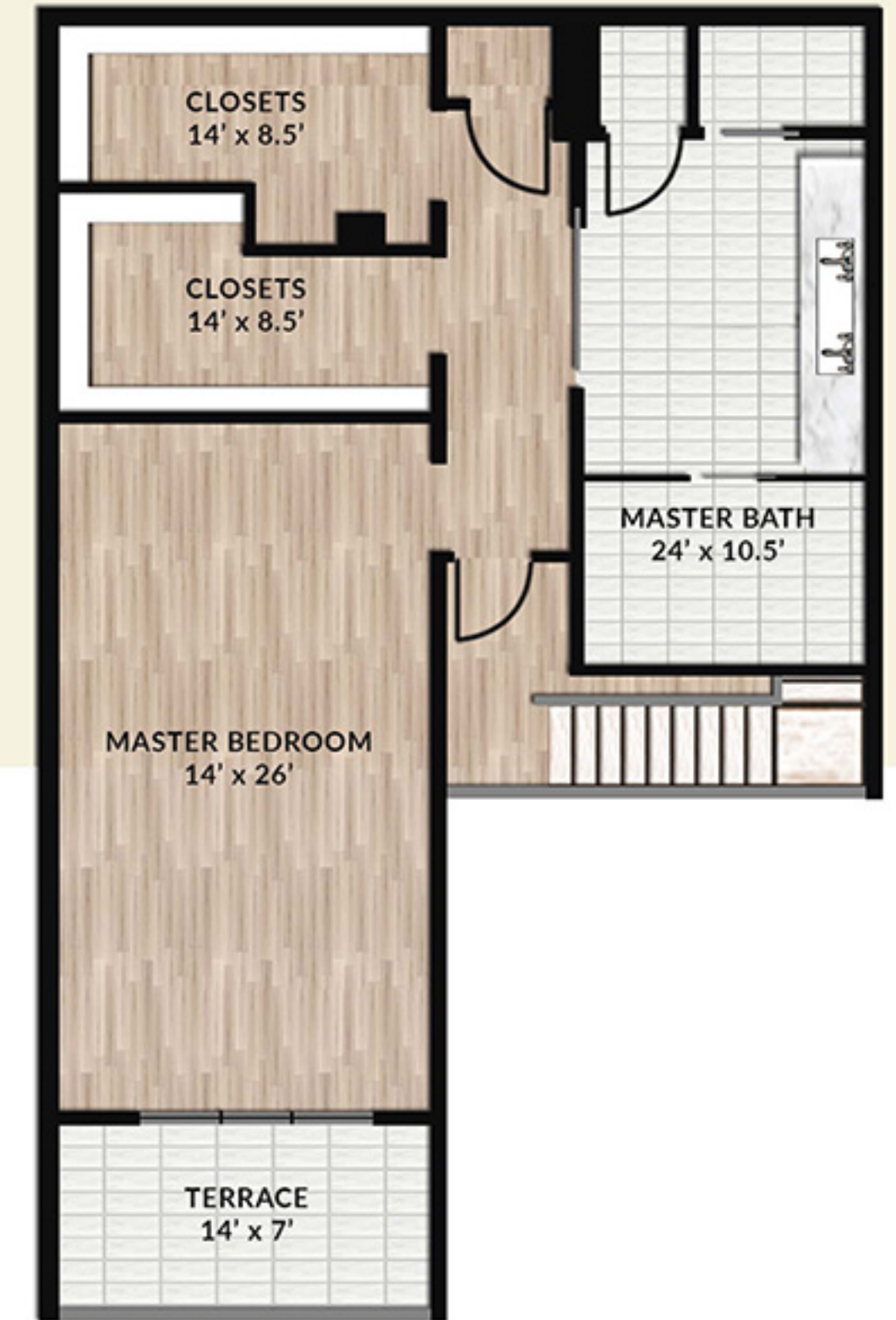


THE MARINER 3B

2 Bedrooms | 2½ Bathrooms | 2,936 Interior Square Feet | 491.5 Exterior Square Feet



BALCONY OVERLOOKS THE NAVESINK

Artist renderings are for illustrative purposes only. Dimensions and square footage are approximate. Finished square footage calculations for this home were made based on plan dimensions only and may vary from the finished square footage of the home as built. Please refer to the architectural plans for full details. See a Sales Consultant for full details.